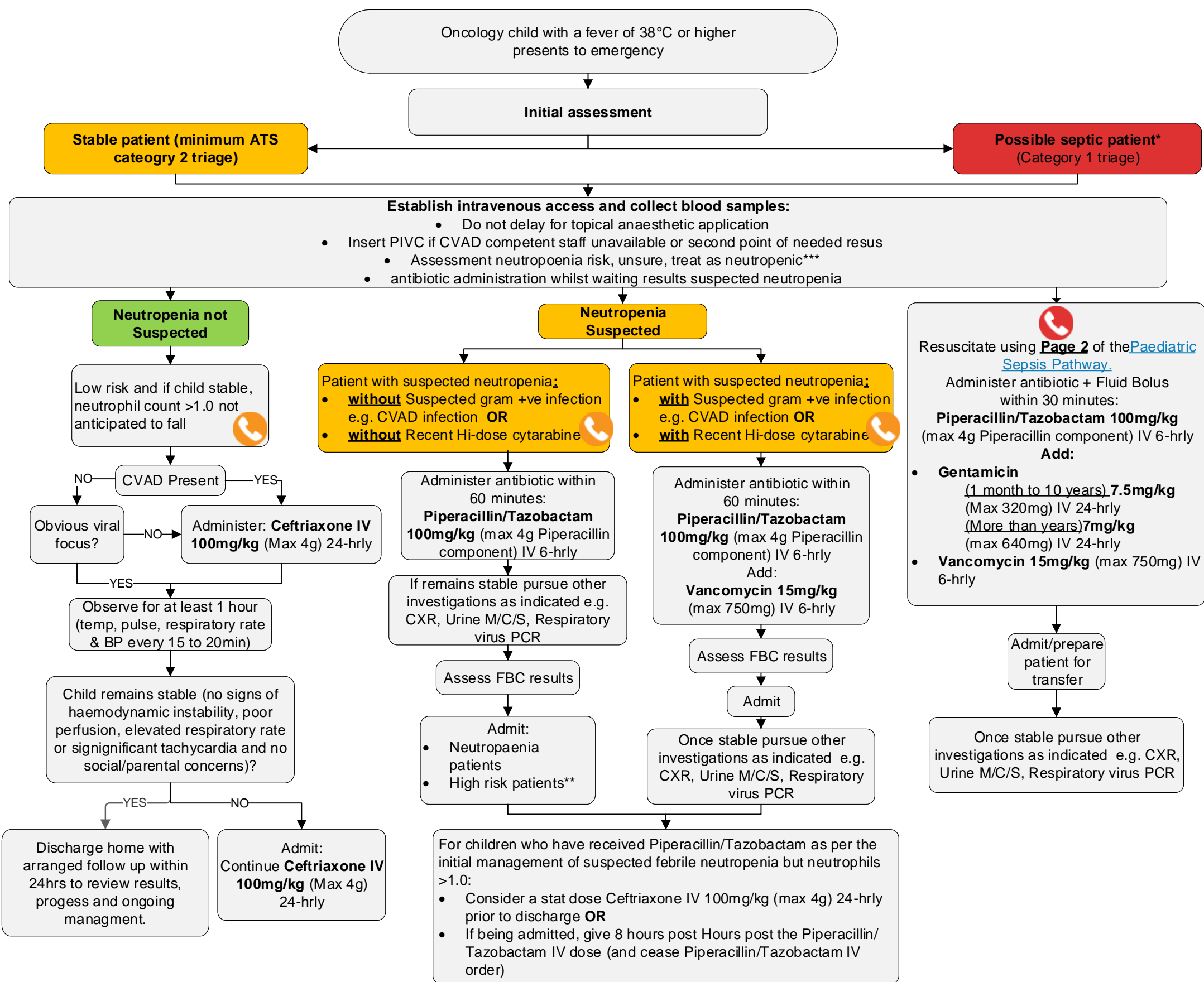


Queensland Paediatric Flowchart

Emergency

Febrile Oncology – Emergency Management in Children – Flowchart



***For sepsis see:**
[CHQ-GDL-01249 Management of Fever in a Paediatric Oncology Patient: Febrile Neutropenia and Non-neutropenia Queensland Statewide Sepsis pathway \(secondary tertiary facilities\)](#)
[Queensland Statewide Paediatric Sepsis pathway \(rural remote facilities\)](#)

****High risk disease:**

<ul style="list-style-type: none"> • AML • ALL: Infant ALL (<1Year); Induction; Delayed intensification • Lymphoma: Induction therapy 	<ul style="list-style-type: none"> • Neuroblastoma stage IV • Downs syndrome • Reinduction therapy for any relapse 	<ul style="list-style-type: none"> • Allogeneic transplant: Day 14 to +180 • Autologous transplant: Day 7 to Day +60
---	---	--

*****High risk of neutropenia**

- IV chemotherapy (other than single agent, Vincristine) within the last 10 to 14 days
- Or high patients as per box on bottom left

Seek advice from the Queensland Oncology Service via CATCH on 13 (13 22 82)

Onsite assistance with airway may include ICU/ENT / Anaesthetics. Call Retrieval Services Queensland (RSQ) on 1300 799 127 if no paediatric critical care facility site

For more information please refer to:
[CHQ-GDL-01249 Management of Fever in a Paediatric Oncology Patient: Febrile Neutropenia and Non-neutropenia](#)

